



BULLETIN BOARD

GREEN INFORMANT SPECIALS

Aeration and Over Seeding

Sign up for fall core aeration and over seeding and receive \$25.00 off both scheduled services. With all the summer stresses we experienced this summer, your lawn may be feeling and looking a little thin. Call now to schedule!

Snow Removal

Sign up for a season contract of snow removal for your drive way or commercial lot and receive the first plow FREE (New clients only). Lawn Tech plows both residential and commercial lots. Save your back and some time by letting us do the work for you. Seasonal Prepayment offers for residential drives are available. Call Curt today for a quote!

Monthly Payment Plans Available

Let Lawn Tech customize a monthly payment plan for your lawn and landscape. Restrictions apply, multiple services are required. Call today and find out how we can keep your household income on budget and still get the services you need. Ask for Curt or Dan for details.



P.O. Box 190
Grand Ledge, MI 48837



**Specialists in Turfgrass
and Landscape Design
Since 1971**

Specializing in the following services:

Fertilizing • Weed Control • Aerating and Seeding • Mole Baiting • Fungus/Insect Control • Landscape Design/Installation • Lawn Installation and Renovation • Water Features • Retaining Walls • Concrete Paver and Flagstone Patios • Outdoor Lighting • Mowing Service • Tree and Shrub Care • Vegetation Management • Mulching/Topressing of Landscape Beds

Contact us!

Lawn Tech

P.O. Box 190 • Grand Ledge, MI 48837
(517) 627-9669 • (517) 626-2645 FAX
www.lawntechofmi.com

Email:

Dan Boak, President
dlb@lawntechofmi.com

Curt Boak, Landscape
cmb@lawntechofmi.com

Joe Peters, Weed and Feed
jap@lawntechofmi.com

Proud Members Of:



TURFGRASS & LANDSCAPE DESIGN

517-627-9669

Since 1971

Fall 2010

THE GREEN INFORMANT

Specialists in Turfgrass and Landscape Design
Commercial and Residential ■ State Certified Technicians

(517) 627-9669 ■ Fax (517) 626-2645 ■ www.lawntechofmi.com

ANOTHER SUMMER ENDS...

ARE YOU A WINNER?

Lawn Tech is awarding our loyal customers by offering a *Landscape Improvement Package*. In each quarterly newsletter, look for your customer number in the prize box. If your customer number is posted you could win a Christmas Light Package installed by Lawn Tech.

If your customer number is listed, call our office to confirm and your name will be entered into the drawing. Each drawing will have a deadline to call by, so be sure to read every issue.

Congratulations to Fred Grove of Eagle for winning the summer giveaway of 100 tulip bulbs planted by Lawn Tech!

2010 CUSTOMER GIVEAWAYS

Winter 2010

First round of weed and feed free

Spring 2010

Lawn Tech cooler packed with summer enjoyment

Summer 2010

100 Tulip bulbs planted by Lawn Tech

Fall 2010

Holiday Decoration package

IN THIS ISSUE . . .

- Fungus
- Rain Gardens?
- G.I. Specials Board
- Landscaping Corner

Wow! What a summer! As any Michigander can attest, it was the warmest summer in quite a few years. Crabgrass, nut sedge, fungus pressure, heat stress and turf dieback are just a few ways to describe a lawn and landscape season that was way short of par for course.

Not only did lawn care companies have challenges, but many golf courses in the state as well as the nation not only struggled to keep their course green, but also kept alive.

I cringe to say it, but it's business. Lawn care renewal for 2011 with Lawn Tech is just around the corner. Your Prepay will be mailed out in December to sign-up and save for the 2011 season. It feels like spring was just a few weeks ago!

Even though this season is closing, there are multiple details to remember that we can carry with us into 2011. Such details as irrigation, repairing heat stressed areas, stressed trees and unfinished landscape projects are just a few. Lawn Tech is here and can help you with all your outdoor needs as we approach next year. We are here this winter and winter is a great time to discuss and schedule any new services for 2011. Be the first to get on our schedule for an early spring start.

With all the heat stress we experienced this past summer, there is bound to be thin turf next spring and summer. This fall will be a great time to core aerate and overseed your lawn. Check out our aeration and over seeding special in this issue.

In closing we are again campaigning to raise research money for MSU and the MTF. The MTF is a champion in supporting turf research at MSU. Lawn Tech is a supporter of the MTF and is asking all its clients to donate \$1.00 to support our cause. This \$1.00 will be added to your Prepay Renewal form to make it as seamless and painless as possible. If you choose not to donate, simply remove the dollar when you submit your Prepayment.

Thanks a million to all our Lawn Tech clients for making 2010 a successful lawn and landscape season. Obviously without you, our loyal clients, there would be no Lawn Tech. We appreciate your patronage and please do not ever hesitate to contact us with any questions or concerns.

Keeping it green!

Dan Boak

Dan Boak
President

PREPAYMENTS FOR 2011 WILL BE MAILED IN DECEMBER!

CURT'S LANDSCAPING CORNER

HOLIDAY LIGHTING AND DECORATIONS

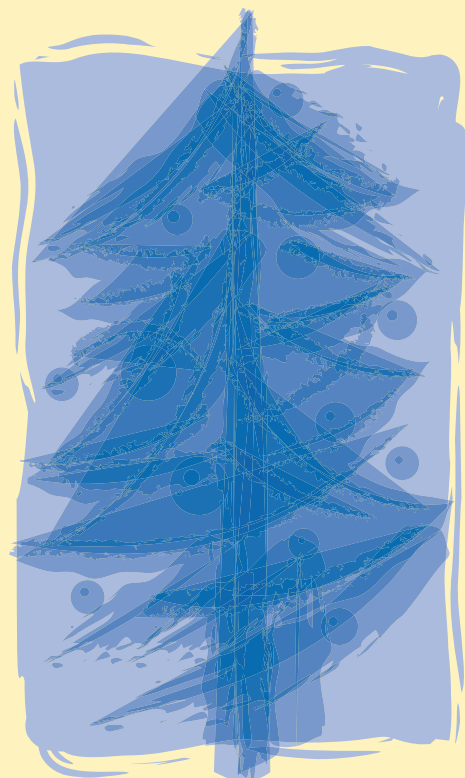
Holiday wreaths, garland, LED lights, bows, and icicle lights are just a few of the items we can install for you this holiday season. We will transform your home into a festival of lights where you will be the envy of the neighborhood. LED lights still are the best investment with the long lasting quality and the less energy use compared to your incandescent lights.

This year Lawn Tech has put together 2 lighting packages to brighten up the home for the holiday season. Check them out in the enclosed insert. Both packages include a great design and quality product.

The best selling point is we will remove, store and install your lights for the next holiday season. If you don't see a package that fits your home, give us a call and we will provide you with a customized quote that will fit your home.

Don't forget to order your wreath! They make great gifts too!

Curt Boak
Landscape Designer



WHY DO WE NEED RAIN GARDENS?

posted on August 27, 2010 09:53
Cydney Steeb, MSU Extension educator

As development increases, the ability of our environment to perform its natural processes decreases. This is because the natural landscape that was once able to absorb and clean stormwater is covered by impervious surfaces. Impervious surfaces are simply surfaces that water is unable to penetrate. Rooftops, driveways and roads are all examples of impervious surfaces. Increased impervious surfaces result in an increased amount of stormwater runoff and an increased chance for pollution to enter our waterways through our storm sewer systems. This type of pollution that results from stormwater runoff is called nonpoint source pollution. Studies have shown that up to 70 percent of the pollution in our streams, rivers and lakes is carried there by runoff from practices we carry out in our own yards and gardens.

Some of the common "nonpoint source pollutants" from our yards that end up in our local waterways include soil, fertilizers, pesticides, pet wastes, grass clippings and other yard debris. Rain gardens capture the rain that would usually runoff your property and allow it to soak into the ground. This helps minimize runoff and helps reduce the amount of pollution that enters our waterways.

Rain gardens perform the following functions: filter stormwater runoff before it enters local waterways, alleviates problems associated with flooding and drainage, recharges the ground water supply, provides habitat and food for wildlife, including birds and butterflies, and enhances the beauty of yards and the community.

The best types of plants to use in a rain garden are Michigan natives. Why? Native plants have adapted to living in our soils and weather conditions. They are easy to care for since they need little if any fertilizer or pesticides, and once established, infrequent watering. Native plants have deep roots systems that channel water deep into the soil and provide soil stability preventing erosion.

For more information about rain gardens including where to locate and how to calculate the ideal size for your site, visit the following websites: www.raingardens.org and www.geaugaswcd.com/rain_gardens.

LAWN TECH PRIZE BOX

If your customer number is posted, call our office by November 30, 2010 to be entered into the drawing for a **Christmas Light Package**. Customer numbers:

5230	3559	3657	4946	4299	3379	3983
4679	5243	4009	6235	4846	4475	11296
3649	4249	2711	3796	6421	11439	4738
5485	3603	4570	3247	5098	4458	2992
11298	1713	3275	3791	3036	2757	6350
3722	4103	11401	4524	11443	5323	5102
1294	1088	6142	4128	11143	4047	5088
4847	4250	5426	11060	4206	3866	6292
5298	1408	3767	1866	1439	1030	5154
1596	2112	2984	2966	11451	5269	3495
5063	2797	3726	5058	3828	11449	11164
2347	11423	2485				



Type in "LawnTech" to find us on Facebook and become a fan! We have an extensive portfolio of pictures and will be adding more as landscape projects are completed. Feel free to post a question on the discussion board!

DID YOU KNOW WE PLOW SNOW?

Lawn Tech offers full commercial and residential snow removal. Call today for a competitive quote! With all seasonal contracts, your first plow is free.



A SEASON FOR FUNGUS

This past summer has left a bad impression for lawn care operators. When the weather goes extreme, so does Mother Nature.

Early red thread fungus appeared as the wet spring was ending and the heat and humidity kicked in. Patches of red cotton candy appeared everywhere. Rye and fescue lawns were hit the worst.

Shortly after, the heat did not end and dollar spot and leaf spot hit the bluegrass lawns.

As we went through late-July and August, the warm days lingered and with some slight evening

cooling cradled with some drought conditions, rust fungus entered the lawns and turned our shoes and mowers a bronze color.

With all these fungus conditions, many occur culturally and will dissipate the same way. Fungicides can be applied, but good old fashion nitrogen and some appropriate watering can remedy many of these funguses and encourage the grass plants to grow out of it. Some fungus pressure will thin the turf and discolor others. Again, the plants will recover as we approach fall. Do not forget that fall aeration and over seeding may be needed to fill in any thin areas. Call us to review your needs to reestablish your turf!!

Looking for an irrigation system for 2011 to keep your lawn green?
Call Lawn Tech for a quote!

\$\$\$

LAWN TECH REFERRAL COUPON

\$\$\$

Keep this coupon! When someone asks about your lawn service, complete this coupon and give to your service technician or return by mail. We'll follow up on your lead. For every new customer sold an annual "Weed and Feed Program" by **LAWN TECH**, we will send you \$20 AND your referral will receive a \$10 credit on their account!

YOUR NAME _____ ACCT. No. _____

ADDRESS _____

PROSPECT'S NAME _____ PHONE _____

ADDRESS _____